


# NGP ANNUAL COMPLIANCE REPORT - 2022

Revision Number: 1

Revision Date: 17/08/2022

## AUTHORISATION

Approved by

Name	Job Title	Signature	Date
Sonia Fourie	Group HSE Manager – Energy Markets & Corporate		17/08/2022

## INTERNAL

© Jemena Limited. All rights reserved. Copyright in the whole or every part of this document belongs to Jemena Limited, and cannot be used, transferred, copied or reproduced in whole or in part in any manner or form or in any media to any person other than with the prior written consent of Jemena.

Printed or downloaded copies of this document are deemed uncontrolled

---

## DOCUMENT HISTORY

---

Revision	Date	Author	Description of Changes
1.0	17/08/2022	Rahul Dorairaj	New Document

---

---

## OWNING FUNCTIONAL GROUP & DEPARTMENT / TEAM

People, Safety & Legal : HSE

---

## TABLE OF CONTENTS

1	INTRODUCTION.....	4
1.1	EPBC APPROVAL KEY INFORMATION SUMMARY.....	4
1.2	EPBC APPROVAL CONDITIONS – COMPLIANCE STATUS.....	4
1.3	PLAINS DEATH ADDER HABITAT DISTURBANCE AND REMOVAL .....	11
2	APPENDICES .....	11
2.1	APPENDIX A – TRANSITIONAL REHABILITATION MONITORING REPORT - 2021 .....	11
2.2	APPENDIX B – NOTIFICATION OF COMMENCEMENT .....	12

## 1 INTRODUCTION

Jemena Northern Gas Pipeline Pty Ltd (referred to herein as *Jemena*) gained approval under the *Environmental Protection and Biodiversity Conservation Act 1999* (Cth) (EPBC Act) as the approval holder to Construction and Operation of the Jemena Northern Gas Pipeline, tenant Creek Northern Territory to Mt Isa, Queensland (EPBC 2015/7569) in 2017. The Northern Gas Pipeline involves the construction of a new, underground, natural gas transmission pipeline, approximately 622 km in length and associated facilities.

This Annual Compliance report will cover compliance against each of the EPBC conditions issued to Jemena between 21 May 2021 and 20 May 2022.

### 1.1 EPBC APPROVAL KEY INFORMATION SUMMARY

EPBC Number	EPBC 2015/7569
Project Name	Jemena Northern Gas Pipeline
Approval Holder and ACN	Jemena Northern Gas Pipeline Pty Ltd (ACN: 607 928 790)
Approved Action	Construct and Operate a buried 622 km high pressure gas pipeline from Tennant Creek (Northern Territory) to Mount Isa (Queensland)
Location of the Project	Tennant Creek (Northern Territory) to Mount Isa (Queensland)
Project Commencement Date	20 May 2017
Person accepting responsibility of this report	Sonia Fourie
Dates for the reporting period of this report	21 May 2021 to 20 May 2022

### 1.2 EPBC APPROVAL CONDITIONS – COMPLIANCE STATUS

A total of 15 environmental approval conditions were placed on the project. The Compliance status of these 15 approval conditions are detailed below:

Condition Number	Condition	Is the Project compliant with this condition?	Evidence/ Comments
1	The approval holder must only take the proposed action within the <b>project area</b> .	Compliant	<p>All Operations during this period has been within the designated project area as described in the final public environment report. This is inclusive of:</p> <ul style="list-style-type: none"> <li>• 30 metre construction right-of-way;</li> <li>• work spaces;</li> <li>• camp sites;</li> <li>• operational facilities;</li> <li>• dams; and</li> <li>• access tracks.</li> </ul>
2	<p>To protect the EPBC Act listed Plains Death Adder (<i>Acanthophis hawkei</i>), the approval holder must not:</p> <p>a) <b>disturb</b> more than 791 hectares of <b>suitable Plains Death Adder habitat</b>; and</p> <p>b) <b>remove</b> more than 36 hectares of <b>suitable Plains Death Adder habitat</b>.</p>	Compliant	<p>Since Commencement of Actions, the following occurred in relation to the Plains Death Adder (<i>Acanthophis hawkei</i>):</p> <p>a) 692 hectares of <b>suitable Plains Death Adder habitat</b> has been <b>disturbed</b>; and</p> <p>b) 4.8 hectares of <b>suitable Plains Death Adder habitat has been removed</b> to allow for one (1) mainline valve and three (3) cathodic protection stations.</p> <p>All construction work subject to the final public environment report and regulatory approval are now complete. No further disturbance or removal of <b>Plains Death Adder habitat</b> is proposed.</p>
3	For the protection of the <b>EPBC Act</b> listed Plains Death Adder, Carpentarian Antechinus ( <i>Pseudantechinus mimulus</i> ) and Greater Bilby ( <i>Macrotis lagotis</i> ), the approval holder must	Compliant	All open trench inspections have been in accordance with the <b>Trench Inspection Procedure</b> (version 2) as provided to the Department on 23 February 2017.

	undertake open trench inspection activities in accordance with the <b>Trench Inspection Procedure (Procedure)</b> .		<p>This version of the Trench Inspection Procedure is available on Jemena's Northern Gas Pipeline Website:  <a href="https://jemena.com.au/pipelines/northern-gas-pipeline">https://jemena.com.au/pipelines/northern-gas-pipeline</a></p> <p>All construction work subject to the final public environment report and regulatory approval are now complete. No further disturbance or removal of Plains Death Adder habitat is proposed.</p>
4	Within five (5) years of the completion of <b>construction</b> , the approval holder must <b>rehabilitate</b> no less than 791 hectares of <b>suitable Plains Death Adder habitat</b> .	Compliant (ongoing)	<p>Completion of construction occurred during 2018-2019 reporting period. Rehabilitation has commenced as per the approved Rehabilitation Management Plan.</p> <p>A Transitional Rehabilitation Monitoring Report (2022) has been prepared and provided in Appendix A of this report.</p>
5	<p>The approval holder must submit a Rehabilitation Management Plan for the Minister's approval in writing. The Rehabilitation Management Plan must include:</p> <ul style="list-style-type: none"> <li>a) <b>rehabilitation acceptance criteria</b>;</li> <li>b) procedures, including contingency measures, that will be undertaken to achieve the <b>rehabilitation acceptance criteria</b>; and</li> <li>c) a monitoring program to determine the success of <b>rehabilitation</b> procedures implemented by the approval holder over the duration of the approval.</li> </ul>	Compliant	<p>The Rehabilitation Management Plan was issued to the Minister for approval on 31 March 2017.</p> <p>This document is confirmed to contain:</p> <ul style="list-style-type: none"> <li>a) rehabilitation acceptance criteria;</li> <li>b) procedures, including contingency measures, that will be undertaken to achieve the rehabilitation acceptance criteria; and</li> <li>c) a monitoring program to determine the success of rehabilitation procedures implemented by the approval holder over the duration of the approval.</li> </ul> <p>A Transitional Rehabilitation Monitoring Report (2022) has been prepared and provided in Appendix A of this report.</p>
6	The approval holder must not <b>commence</b> the action until the Rehabilitation Management Plan has been approved by the <b>Minister</b> in writing. The approved Rehabilitation Management Plan must be implemented by the approval holder.	Compliant	<p>The Rehabilitation Management Plan was approved on behalf of the Minister on 19 April 2017. This is the most current version of the plan and has been implemented.</p> <p>The Rehabilitation Management Plan is available on Jemena's Northern Gas Pipeline Website:  <a href="https://jemena.com.au/pipelines/northern-gas-pipeline">https://jemena.com.au/pipelines/northern-gas-pipeline</a></p>

7	<p>Within 10 days after the <b>commencement</b> of the action, the approval holder must advise the <b>Department</b> in writing of the actual date of <b>commencement</b>.</p>	Compliant	<p>Date of commencement of the Project was 20 May 2017. This was communicated to the Department on 29 May 2017. Refer to Appendix B of this report.</p>
8	<p>The approval holder must maintain accurate records substantiating all activities associated with or relevant to the conditions of approval, including measures taken to implement the <b>Procedure</b> and management plan required by this approval, and make them available upon request to the <b>Department</b>. Such records may be subject to audit by the <b>Department</b> or an independent auditor in accordance with section 458 of the <b>EPBC Act</b>, or used to verify compliance with the conditions of approval. Summaries of audits will be posted on the <b>Department's</b> website. The results of audits may also be publicised through the general media.</p>	Complaint	<p>All records have been accurately maintained and may be made available to the Department should there be any request to do so.</p> <p>This includes the current 2021-2022 Northern Gas Pipeline Transitional Rehabilitation Monitoring Report that is the basis for this EPBC Annual Report.</p>
9	<p>Within three (3) months of every 12 month anniversary of the <b>commencement</b> of the action, the approval holder must publish a report (the Annual Compliance Report) on its website describing compliance with each of the conditions of this approval, during the previous 12 months. The approval holder must also provide in this report:</p> <ul style="list-style-type: none"> <li>a) a reconciliation of actual <b>disturbance</b> and <b>removal</b> of <b>suitable Plains Death Adder habitat</b> (in hectares) on the <b>project area</b> against the <b>disturbance</b> and <b>removal</b> limits specified in condition 2; and</li> <li>b) progress against the <b>rehabilitation acceptance criteria</b> required at condition 5.</li> </ul> <p>Documentary evidence providing proof of the date of the publication must be provided to the <b>Department</b> at the same time as the Annual Compliance Report is published. The approval holder must continue to publish the Annual Compliance Report each year until such time as agreed to in writing by the <b>Minister</b>.</p>	Complaint	<ul style="list-style-type: none"> <li>a) Reconciliation of actual disturbance and removal of suitable Plains Death Adder habitat (in hectares) on the project area against the disturbance and removal limits specified in condition 2 is provided in Section 1.3 of this report.</li> <li>b) Progress against the Rehabilitation Acceptance Criteria is detailed in Appendix A of this report.</li> </ul> <p>The Annual Compliance Report is available on Jemena's Northern Gas Pipeline Website:</p> <p><a href="https://jemena.com.au/pipelines/northern-gas-pipeline">https://jemena.com.au/pipelines/northern-gas-pipeline</a></p>

10	The approval holder must report any potential or actual contravention of the conditions of this approval to the <b>Department</b> in writing within two (2) days of the approval holder becoming aware of a contravention.	Not applicable	There were no contravention to the conditions of this approval till date.
11	Upon the written direction of the <b>Minister</b> , the approval holder must ensure that an independent audit of compliance with the conditions of approval is conducted and a report submitted to the <b>Minister</b> . The approval holder must not commence the audit until the <b>Minister</b> approves the independent auditor and audit criteria in writing. The audit report must address the criteria to the satisfaction of the <b>Minister</b> .	Not applicable	This did not occur during the reporting period.
12	<p>The approval holder may choose to revise the <b>Procedure</b> or management plan approved by the <b>Minister</b> under conditions 3 and 5 without submitting it for approval under section 143A of the <b>EPBC Act</b>, if the taking of the action in accordance with the revised <b>Procedure</b> or management plan would not be likely to have a <b>new or increased impact</b>. If the approval holder makes this choice they must:</p> <ul style="list-style-type: none"> <li>a) notify the <b>Department</b> in writing that the approved <b>Procedure</b> or management plan has been revised and provide the <b>Department</b>, at least four weeks before implementing the revised <b>Procedure</b> or management plan, with: <ul style="list-style-type: none"> <li>i. an electronic copy of the revised <b>Procedure</b> or management plan;</li> <li>ii. an explanation of the differences between the revised <b>Procedure</b> or management plan and the approved <b>Procedure</b> or management plan; and</li> </ul> </li> </ul> <p>the reasons the approval holder considers that the taking of the action in accordance with the revised <b>Procedure</b> or management plan would not be likely to have a <b>new or increased impact</b>.</p>	Not applicable	This did not occur during the reporting period.



12A	<p>The approval holder may revoke its choice under condition 12 at any time by notice to the <b>Department</b>. If the approval holder revokes the choice to implement the revised <b>Procedure</b> or management plan, without approval under section 143A of the <b>EPBC Act</b>, the <b>Procedure</b> or management plan approved by the <b>Minister</b> must be implemented.</p>	Not applicable	This did not occur during the reporting period.
12B	<p>If the <b>Minister</b> gives a notice to the approval holder that the <b>Minister</b> is satisfied that the taking of the action in accordance with the revised <b>Procedure</b> or management plan would be likely to have a <b>new or increased impact</b>, then:</p> <ul style="list-style-type: none"> <li>a) condition 12 does not apply, or ceases to apply, in relation to the revised <b>Procedure</b> or management plan; and</li> <li>b) the approval holder must implement the <b>Procedure</b> or management plan approved by the <b>Minister</b>.</li> </ul> <p>To avoid any doubt, this condition does not affect any operation of conditions 12 and 12A in the period before the day the notice is given.</p> <p>At the time of giving the notice, the Minister may also notify the approval holder that for a specified period of time that condition 12 does not apply for the Procedure or management plan required under the approval.</p>	Not applicable	This did not occur during the reporting period.
13	<p>Conditions 12, 12A and 128 are not intended to limit the operation of section 143A of the <b>EPBC Act</b> which allows the approval holder to submit a revised <b>Procedure</b> or management plan to the <b>Minister</b> for approval.</p>	Not applicable	This did not occur during the reporting period.
14	<p>If, at any time after five (5) years from the date of this approval, the approval holder has not <b>commenced</b> the action, then the approval holder must not <b>commence</b> the action without the written agreement of the <b>Minister</b>.</p>	Not applicable	Date of commencement of the Project was 20 May 2017. This was communicated to the Department on 29 May 2017. Refer to Appendix B of this report.

15	Unless otherwise agreed to in writing by the <b>Minister</b> , the approval holder must publish the <b>Procedure</b> and Rehabilitation Management Plan on its website. The <b>Procedure</b> and Rehabilitation Management Plan must be published on the website within one (1) month of being approved by the <b>Minister</b> or being submitted under condition 12. The published <b>Procedure</b> and Rehabilitation Management Plan must remain on the website for the lifetime of the approval unless otherwise agreed to in writing by the <b>Minister</b> .	Compliant	The approved rehabilitation management plan has been published on Jemena's Northern Gas Pipeline Website:  <a href="https://jemena.com.au/pipelines/northern-gas-pipeline">https://jemena.com.au/pipelines/northern-gas-pipeline</a>
----	--	-----------	--

### 1.3 PLAINS DEATH ADDER HABITAT DISTURBANCE AND REMOVAL

Table 2 below demonstrates the currently reconciled areas of suitable Plains Death Adder habitat disturbed and removed during the reporting period and since Project Commencement. To date, these are within the permitted thresholds of this EPBC decision.

Please note that the removal of Plains Death Adder habitat was associated with the construction for the following:

- one mainline valve; and
- three cathodic protection stations.

During this reporting period (20th May 2021 to 19th May 2022), there was no further Plains Death Adder habitat disturbed or removed.

Table 2: Plains Death Adder disturbed and removed habitat

	Maximum Permitted Quantity <sup>1</sup>	Previously Reported Reconciled Quantity	Additional Reconciled Quantity for Current Reporting Period	Total Reconciled Quantity Since Project Commencement
Plains Death Adder Habitat Area <u>Disturbed</u>	791 ha	692 ha	0 ha	692 ha
Plains Death Adder Habitat Area <u>Removed</u>	36 ha	4.8 ha	0 ha	4.8 ha

**Note 1:** Maximum limit as set out in EPBC Decision 2015/7569

## 2 APPENDICES

### 2.1 APPENDIX A – TRANSITIONAL REHABILITATION MONITORING REPORT - 2022

# NGP - TRANSITIONAL REHABILITATION ASSESSMENT REPORT

Revision Number: 1.0

INTERNAL

© Jemena Limited. All rights reserved. Copyright in the whole or every part of this document belongs to Jemena Limited, and cannot be used, transferred, copied or reproduced in whole or in part in any manner or form or in any media to any person other than with the prior written consent of Jemena.

Printed or downloaded copies of this document are deemed uncontrolled



---

## DOCUMENT HISTORY

---

Revision	Date	Author	Description of Changes
1.0	15/08/2022	Rahul Dorairaj	New Document

---

TABLE OF CONTENTS

1. EXECUTIVE SUMMARY ..... 4

2. INTRODUCTION..... 4

    2.1 BACKGROUND..... 4

    2.2 SCOPE ..... 5

    2.3 EXISTING ENVIRONMENT ..... 5

    2.4 RAINFALL..... 5

    2.5 LAND SYSTEMS..... 6

3. ASSESSMENT OF TRANSITIONAL COMPLETION CRITERIA ..... 9

4. APPENDICES ..... 10

    4.1 LAND STABILITY OBSERVATION LOCATIONS AND RECOMMENDED ACTIONS TABLE ..... 10

## 1. EXECUTIVE SUMMARY

The Northern Gas Pipeline (NGP) is a 622 km buried gas pipeline linking existing gas pipelines in the Northern Territory (NT) and Queensland (Qld). The NGP is currently in the transitional rehabilitation phase which involves returning disturbed areas to a stable, non-polluting landform, the return of native species and the control of weed species. The transitional rehabilitation phase monitors the progress of rehabilitation ensuring that it is transitioning towards final rehabilitation. Meeting the transitional rehabilitation criteria is the responsibility of Jemena. Monitoring will be conducted annually for the first five years following completion of construction (or until the transitional rehabilitation criteria are met).

This 2022 document reports on year 3 of the 5 year transitional rehabilitation phase and is the third transitional rehabilitation assessment of the NGP project area.

The assessment found that rectification works have been carried out since the last assessment in 2021 and the area disturbed by the pipeline construction is generally rehabilitating well. The majority of the rehabilitated area along the pipeline easement meets the criteria designated in the Rehabilitation Management Plan for this transitional phase of the rehabilitation process. However, limited sections of the pipeline did not meet the criteria for various reasons. These reasons included scattered occurrences of 11 species of introduced flora and weeds, scattered small areas currently lacking ground cover and limited areas of erosion, subsidence and deteriorating berms. Intervention is needed in order to fully meet the criteria and successfully maintain the transitional rehabilitation at the standard required to ensure that it is transitioning towards final and complete rehabilitation.

Recommendations include:

- Control of areas of weed incursion within the disturbed areas, and consider working with adjacent landholders to control weeds immediately adjacent to the pipeline.
- Maintain land stability by repairing and remodelling damaged or ineffective berms and constructing additional berms to effectively divert water flows off the pipeline corridor, Repair small areas of subsidence of the pipeline.
- Provide suitable habitat to allow native groundcover to establish along the entirety of the ROW by ripping or scarifying soil on the contour in areas with no vegetation and limited top soil.

## 2. INTRODUCTION

### 2.1 BACKGROUND

---

The Northern Gas Pipeline (NGP) is a 622 km buried gas pipeline linking existing gas pipelines in the Northern Territory (NT) and Queensland (Qld). Construction of the pipeline commenced on 20 May 2017, Jemena took over the site from the construction contractors in June 2018, and the pipeline became operational on 3rd January 2019. The project area has since been assessed for defects to land surface such as erosion and identified defects rectified.

Approval for the NGP was dependent on the development and implementation of a Rehabilitation Management Plan (RMP) that incorporated the requirements of the three interested jurisdictions – NT, QLD, and the Commonwealth. Of particular interest to the Commonwealth was the restoration of habitat for the threatened Plains Death Adder found between approximately KP 355 and KP 561.

The RMP defined three phases to rehabilitation:

- **Reinstatement:** The process of bulk earthworks and structural replacement of pre-existing conditions of a site (i.e. backfilling of trench, reinstating soil surface topography including scouring or ripping, watercourse lines, culverts, fences and gates and other landscape

features). It also includes placing cleared vegetation across disturbed areas. Reinstatement occurs during the construction phase and is the responsibility of the Construction Contractor.

- **Transitional rehabilitation:** The process of returning disturbed areas to a stable, non-polluting landform, the return of native species and the control of weed species. It differs from the reinstatement phase in that it generally does not involve bulk earthworks, but instead monitors the progress of rehabilitation ensuring that it is transitioning towards final rehabilitation, where an issue is found, it is to be rectified. Transitional rehabilitation monitoring will focus on areas where failure risk is high. These include erosion at watercourse crossings; weeds at construction weed hygiene locations, and preventing any weed incursion.
- **Rehabilitation:** The process of returning a site's structural habitat complexity, and ecosystem processes and services to that of the pre-existing conditions at the site or an analogue site.

The NGP is currently in the transitional rehabilitation phase. Meeting the transitional rehabilitation criteria is the responsibility of Jemena. Monitoring will be conducted annually for the first five years following completion of construction (or until the transitional rehabilitation criteria are met). This is the third transitional rehabilitation assessment of the NGP project area.

## 2.2 SCOPE

---

The scope of this report is to assess the status of transitional rehabilitation across the NGP project area. In this assessment, the focus is on soil/land stability, vegetation growth, and weeds.

The aerial assessment was carried out by Jemena Environmental Business Partner on 17 May 2022 following the 2021/2022 Northern Territory/Queensland wet season. The pipeline right of way (ROW) was traversed from west to east aurally and observations and photos were recorded.

## 2.3 EXISTING ENVIRONMENT

## 2.4 RAINFALL

---

The NGP project area is in an arid climate characterised by a small (< 250 mm/year on average) and highly variable rainfall. Rainfall affects rehabilitation through plant recruitment and erosional processes. The rainfall pattern across the project area is driven by monsoonal or cyclonic events to the north resulting in higher rainfalls in summer. In the year prior to the survey all three regional areas, Tennant Creek, Camooweal and Mount Isa had above average rainfall, during the month of January 2022 (see Figure 1).



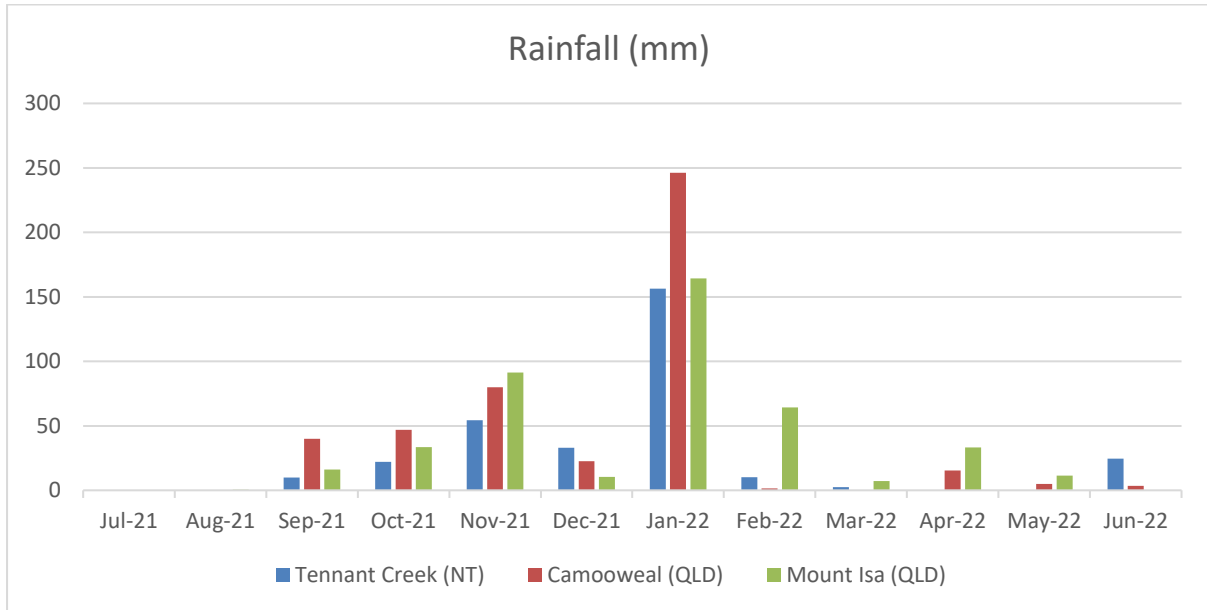


Figure 1. Recorded rainfall at Tennant Creek, Camooweal and Mount Isa during FY2021-22.

## 2.5 LAND SYSTEMS

The ROW for the northern Gas pipeline is wholly contained within the land systems of the Barkley region, shown below in Figure 2. Land system mapping collates data on climate, geological material, landform, soil and native vegetation. The following table describes each of the land systems traversed by the ROW.

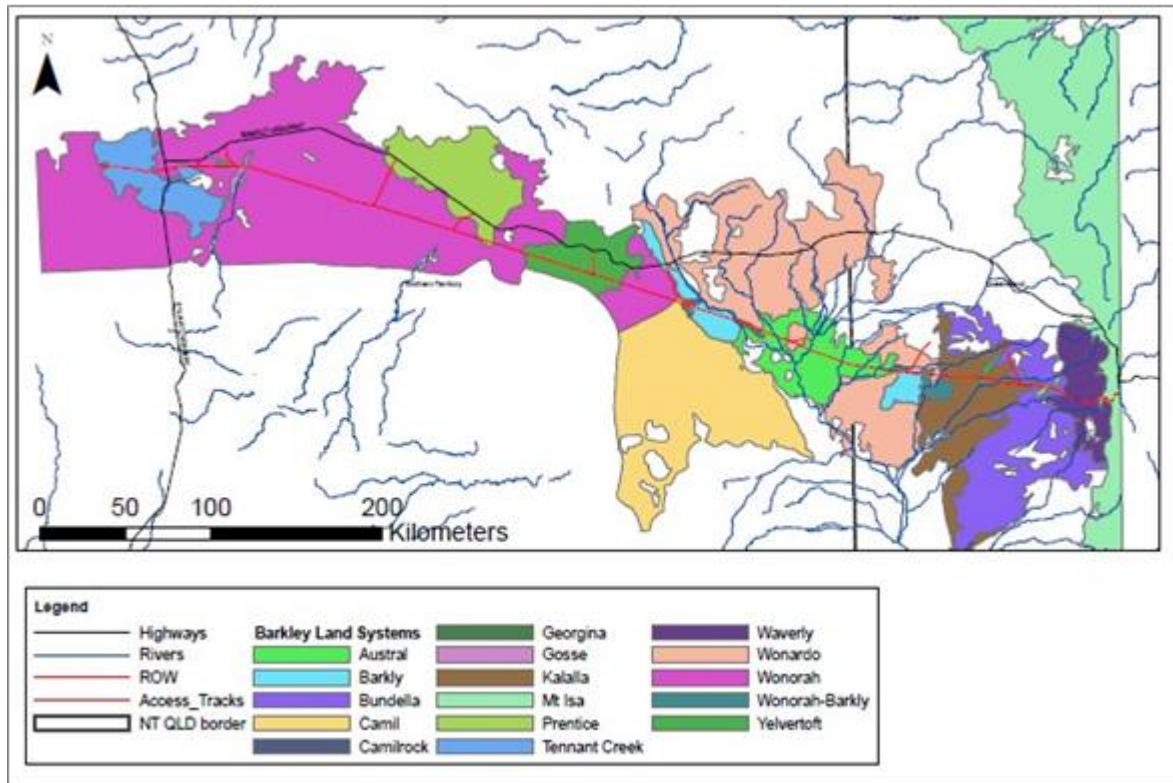


Figure 2. Land systems of the Barkley region

<b>Land System</b>	<b>Description</b>
Mt Isa	This lightly-timbered, rugged, hilly country with North-South ridges extend from the South East corner of the area to about 193Km North and West of lawn Hill Homestead.
Wonorah	Gently undulating country with deep lateritic soil and low scrubby vegetation. There is one large area in the south-west and numerous scattered areas in the central and eastern portions.
Prentice	Gently undulating country carrying scrubby vegetation and occurring between Wonorah and Frewina on the Barkly Highway
Tennant Creek	An area of lightly-timbered flat-topped hills and broad valleys in the South West corner of the region.
Gosse	A number of small, scattered areas of sandy, seasonally flooded flats in the South West "desert" portion of the region
Yelvertoft	Numerous widely separated areas of undulating timbered country in the S. half of the region with gravelly and stony latcritie soils.
Wonardo	Irregular areas of gently undulating to nearly flat Mitchell grass plains confined to the Georgina valley in the SE. portion of the region
Yelvertoft	Numerous widely separated areas of undulating timbered country in the S. half of the region with gravelly and stony latcritie soils.
Barkly	Very gently undulating to nearly flat Mitchell grass plains covering much of the area commonly referred to as the Barkly Tableland
Camil	This gently undulating country with spinifex and low shrubs has leached limestone soils; it occurs as one large and a number of small areas West of Lake Nash Homestead
Camilrock	Several small areas of gently undulating country with numerous limestone outcrops, and carrying spinifex and low shrubs to the West and North West of Lake Nash Homestead
Wonardo	Irregular areas of gently undulating to nearly flat Mitchell grass plains confined to the Georgina valley in the SE. portion of the region
Waverly	A broken strip of hilly lightly-timbered granite country with mostly steep to moderate slopes which extends from the SE. corner of the region to the North of Mt. Isa.
Wonorah	Gently undulating country with deep lateritic soil and low scrubby vegetation. There is one large area in the south-west and numerous scattered areas in

Camilrock	Several small areas of gently undulating country with numerous limestone outcrops, and carrying spinifex and low shrubs to the West and North West of Lake Nash Homestead
Camil	This gently undulating country with spinifex and low shrubs has leached limestone soils; it occurs as one large and a number of small areas West of Lake Nash Homestead
Austral	A number of small areas of gently undulating Mitchell grass plains near Brunette Downs homestead in the Barkley Basin and between Austral Downs and Carandotta Homesteads in the Gerorgina Basin
Bundella	Undulating, sandy, low-scrub country extending from Barkly Downs Homestead SB. and S. towards Admore Homestead.
Yelvertoft	Numerous widely separated areas of undulating timbered country in the S. half of the region with gravelly and stony latcritie soils.
Wonorah-Barkly	Gently undulating country with deep lateritic soil and low scrubby vegetation. There is one large area in the south-west and numerous scattered areas in the central and eastern portions.
Wonorah-Barkly	Gently undulating country with deep lateritic soil and low scrubby vegetation. There is one large area in the south-west and numerous scattered areas in the central and eastern portions.
Kalalla	Flat to very gently undulating plains with occasional internal drainage depression. Slopes <2%.
Georgina	Flat to gently undulating plains and alluvial plains. Slopes 0-4% and mainly < 2%.
Wonardo	Irregular areas of gently undulating to nearly flat Mitchell grass plains confined to the Georgina valley in the SE. portion of the region
Barkly	Very gently undulating to nearly flat Mitchell grass plains covering much of the area commonly referred to as the Barkly Tableland
Mt Isa	This lightly-timbered, rugged, hilly country with North-South ridges extend from the South East corner of the area to about 193Km North and West of lawn Hill Homestead.
Kalalla	Flat to very gently undulating plains with occasional internal drainage depression. Slopes <2%.
Mt Isa	This lightly-timbered, rugged, hilly country with North-South ridges extend from the South East corner of the area to about 193Km North and West of lawn Hill Homestead.

### 3. ASSESSMENT OF TRANSITIONAL COMPLETION CRITERIA

The following criteria designated in the RMP are used to assess the transitional rehabilitation status of disturbed areas.

*Significantly disturbed areas that are no longer required for operational purposes, must be transitionally rehabilitated within 12 months (unless exceptional circumstance in the area to be rehabilitated (e.g. flood event) prevents this timeframe being met) and be maintained to meet the following acceptance criteria:*

a) Disturbed areas are:

(i) a stable landform

(ii) re-profiled to contours consistent with the surrounding landform b) surface drainage lines are re-established

c) top soil is reinstated in disturbed areas; and

d) either

(i) groundcover, that is not a declared pest species, is growing in disturbed areas; or

(ii) an alternative soil stabilisation methodology that achieves effective stabilisation is implemented and maintained in disturbed areas.

**Table 1** summarises the results of the assessment of each transitional rehabilitation criteria. This table reports on year 3 of the 5 year transitional rehabilitation phase

**Table 1:** Assessment of each transitional rehabilitation criteria

Criteria	Conclusion/recommendations
Disturbed areas are a stable landform within 12 months and maintained.	Incomplete. There is a significant portion which meets this criteria. However, there were limited areas of erosion, subsidence and ineffective and deteriorating berms observed at various locations throughout the ROW. These conditions are predominately minor however management action is required to achieve a stable landform along the pipeline. This is further outlined in section 3.2
Disturbed areas are re-profiled to contours consistent with the surrounding landform	Complete. No exceptions noted.
Surface drainage lines are re-established within 12 months	Re-establishment completed during the projects' reinstatement phase. This criteria has been met, with no exceptions noted
Top soil is reinstated in disturbed areas within 12 months	This was undertaken during the projects' reinstatement phase. It is noted that areas with no revegetation may be a result of variable topsoil respreading during the reinstatement phase.

<p>Native groundcover, that is not a declared pest species, is growing in disturbed areas, or an alternative soil stabilisation methodology that achieves effective stabilisation is implemented and maintained within 12 months</p>	<p>Overall the 622 km long ROW for the Northern Gas Pipeline is revegetating well and the majority of it meets the transitional rehabilitation criteria. To fully address this criteria further intervention is needed to address the limited areas currently lacking ground cover. Refer section 3.3 for recommendations.</p>
<p>No weed incursion or spread within the NGP footprint. (performance indicator for transitional rehabilitation)</p>	<p>The western half of the pipeline in the desert regions were weed free. There were limited weed occurrences in the eastern half of the pipeline particularly in pastoral lands and in the Barrier range in the Waverly land system. Declared weeds are restricted to 6 locations and result from incursion from adjacent populations on pastoral lands.</p>

## 4. APPENDICES

### 4.1 LAND STABILITY OBSERVATION LOCATIONS AND RECOMMENDED ACTIONS TABLE

This table includes all observations of erosion, compromised berms and pipeline trench subsidence along the 622 km NGP pipeline. The Observations in the table are sorted from West to East along the pipeline.

ID	Category	KP	Culturally Sensitive Area	Environmentally Sensitive Area	Recommended Actions
1	Compromised Berm. Repair works have been undertaken in late 2021.	2.170			Continue to Monitor.
2	Minor Erosion. Repair works have been undertaken in late 2021.	4.442			Continue to Monitor.
3	Minor Erosion. Repair works have been undertaken in late 2021.	4.453			Continue to Monitor.
4	Minor Erosion. Repair works have been undertaken in late 2021.	4.747			Continue to Monitor.
5	Compromised Berm. Repair works have been undertaken in late 2021.	5.430			Continue to Monitor.
6	Compromised Berm and Minor Erosion. Repair works have been undertaken in late 2021.	5.824			Continue to Monitor.
7	Compromised Berm. Repair works have been undertaken in late 2021.	6.397			Continue to Monitor.
8	Moderate subsidence. Repair works have been undertaken in late 2021.	6.489			Continue to Monitor.
9	Moderate subsidence. Repair works have been undertaken in late 2021.	6.777			Continue to Monitor.
10	Compromised Berm. Repair works have been undertaken in late 2021.	7.410	Culturally Sensitive		Continue to Monitor.
11	Compromised Berm. Repair works have been undertaken in late 2021.	7.444	Culturally Sensitive		Continue to Monitor.
12	Moderate erosion. Repair works have been undertaken in late 2021.	7.591	Culturally Sensitive		Continue to Monitor.
13	Moderate subsidence and moderate erosion. Repair works have been undertaken in late 2021.	7.828	Culturally Sensitive		Continue to Monitor.
14	Minor Erosion. Repair works have been undertaken in late 2021.	8.171	Culturally Sensitive		Continue to Monitor.
15	Minor Erosion. Repair works have been undertaken in late 2021.	8.418	Culturally Sensitive		Continue to Monitor.
16	Minor Erosion. Repair works have been undertaken in late 2021.	8.451	Culturally Sensitive		Continue to Monitor.
17	Minor Erosion. Repair works have been undertaken in late 2021.	8.457	Culturally Sensitive		Continue to Monitor.
18	Minor Erosion. Repair works have been undertaken in late 2021.	8.615	Culturally Sensitive		Continue to Monitor.
19	Compromised Berm. Repair works have been undertaken in late 2021.	8.771	Culturally Sensitive		Continue to Monitor.
20	Minor Erosion. Repair works have been undertaken in late 2021.	8.868	Culturally Sensitive		Continue to Monitor.
21	Minor Erosion. Repair works have been undertaken in late 2021.	9.247	Culturally Sensitive		Continue to Monitor.
22	Compromised Berm	9.380	Culturally Sensitive		Install new berms between KP9.8 and KP10
23	Minor Erosion	11.675	Culturally Sensitive		Monitor Erosion
24	Moderate subsidence	15.593	Culturally Sensitive		Fill
25	Minor Erosion	24.694			New berms required between KP20-30. Address minor erosion issues
26	Compromised Berm and Minor Erosion	24.929			New berms required between KP20-30. Address minor erosion issues
27	Minor Erosion	27.315	Culturally Sensitive - north of easement		New berms required between KP20-30. Address minor erosion issues
28	Compromised Berm	27.370	Culturally Sensitive - north of easement		New berms required between KP20-30. Address minor erosion issues
29	Minor Erosion	27.968	Culturally Sensitive - north of easement		New berms required between KP20-30. Address minor erosion issues
30	Moderate erosion	29.293	Culturally Sensitive - north of easement		New berms required between KP20-30. Address minor erosion issues

ID	Category	KP	Culturally Sensitive Area	Environmentally Sensitive Area	Recommended Actions
31	Compromised Berm and Minor Erosion	29.510	Culturally Sensitive - north of easement		New berms required between KP20-30. Address minor erosion issues
32	Additional berm/s needed	30.111	Culturally Sensitive - north of easement		New berms required between KP20-30. Address minor erosion issues
33	Minor Erosion	31.247			Monitor Erosion
34	Additional berm/s needed	31.636			New berms required. Address minor erosion issues
35	Moderate erosion	32.190	Culturally Sensitive		Fill and Smooth
36	Minor Erosion	36.043			Monitor Erosion
37	Minor Erosion	36.568	Culturally Sensitive		New berms required. Address minor erosion issues
38	Minor Erosion	38.274			Monitor Erosion
39	Minor Erosion	38.968			Monitor Erosion
40	Minor Erosion	39.142			Undertake earthworks to address erosion and berm issues
41	Minor Erosion	40.550			Undertake earthworks to address erosion and berm issues
42	Minor Erosion	40.740			Undertake earthworks to address erosion and berm issues
43	Minor Erosion	41.246			Undertake earthworks to address erosion and berm issues
44	Compromised Berm	45.712			Undertake earthworks to address erosion and berm issues
45	Additional berm/s needed	45.765			Undertake earthworks to address erosion and berm issues
46	Compromised Berm	48.540			Undertake earthworks to address erosion and berm issues
47	Minor Erosion	51.408	Culturally Sensitive - south of easement		Monitor Erosion. Vegetation (tree growth) issues to be addressed
48	Moderate erosion	51.509	Culturally Sensitive - south of easement		Undertake earthworks to address erosion and berm issues
49	Minor Erosion	51.573	Culturally Sensitive - south of easement		Monitor Erosion. Vegetation (tree growth) issues to be addressed
50	Minor Erosion	51.816	Culturally Sensitive - south of easement		Monitor Erosion. Vegetation (tree growth) issues to be addressed
51	Moderate erosion	54.737	Culturally Sensitive		Earthworks to be undertaken to address erosion and berm issues. Vegetation (tree growth) to be addressed
52	Minor Erosion	55.416	Culturally Sensitive		Monitor Erosion. Vegetation (tree growth) issues to be addressed
53	Minor Erosion	55.740	Culturally Sensitive		Monitor Erosion. Vegetation (tree growth) issues to be addressed
54	Minor Erosion	56.091			Earthworks to be undertaken to address erosion and berm issues. Vegetation (tree growth) to be addressed
55	Minor Erosion	56.307	Culturally Sensitive		Monitor Erosion Vegetation (tree growth) issues to be addressed
56	Minor Erosion	56.437	Culturally Sensitive		Monitor Erosion Vegetation (tree growth) issues to be addressed
57	Minor Erosion	56.707	Culturally Sensitive		Monitor Erosion Vegetation (tree growth) issues to be addressed
58	Minor Erosion	57.457			Monitor Erosion Vegetation (tree growth) issues to be addressed
59	Minor Erosion	58.750			Monitor Erosion Vegetation (tree growth) issues to be addressed
60	Minor Erosion	59.018			Monitor Erosion Vegetation (tree growth) issues to be addressed
61	Moderate erosion	60.397			Earthworks to be undertaken to address erosion and berm issues. Vegetation (tree growth) to be addressed
62	Minor Erosion	61.805			Monitor Erosion
63	Minor Erosion	62.086			Monitor Erosion
64	Minor Erosion	65.912			Monitor Erosion
65	Minor Erosion	67.956	Culturally Sensitive - south of easement		Monitor Erosion



ID	Category	KP	Culturally Sensitive Area	Environmentally Sensitive Area	Recommended Actions
66	Minor Erosion	69.748	Culturally Sensitive - south of easement		Monitor Erosion
67	Minor Erosion	69.865	Culturally Sensitive - south of easement		Monitor Erosion
68	Minor Erosion	84.134			Monitor Erosion
69	Minor subsidence	87.402			Monitor Erosion
70	Moderate erosion	90.947			Fill and Smooth
71	Minor Erosion	92.205			Monitor Erosion
72	Minor Erosion	110.172			Monitor Erosion
73	Minor Erosion	123.065			Monitor Erosion
74	Minor Erosion	124.621			Monitor Erosion
75	Minor Erosion	124.978			Monitor Erosion
76	Minor Erosion	134.665			Monitor Erosion
77	Minor Erosion	138.043			Monitor Erosion
78	Minor Erosion	138.460			Monitor Erosion
79	Minor Erosion	170.002			Monitor Erosion
81	Minor Erosion	205.600			Monitor Erosion
82	Minor Erosion	221.172			Monitor Erosion
83	Minor Erosion	222.924			Monitor Erosion
84	Minor Erosion	225.338			Monitor Erosion
85	Minor Erosion	226.314			Monitor Erosion
86	Minor Erosion	228.603			Monitor Erosion
87	Minor Erosion	229.071			Monitor Erosion
88	Minor Erosion	230.303			Monitor Erosion
89	Minor Erosion	233.510			Monitor Erosion
90	Minor Erosion	233.538			Monitor Erosion
91	Minor Erosion	234.761			Monitor Erosion
92	Minor Erosion	234.780			Monitor Erosion
93	Minor Erosion	235.934			Monitor Erosion
94	Compromised Berm and Minor Erosion	254.242	Culturally Sensitive		Address erosion issues and install new berms
95	Minor Erosion	254.245	Culturally Sensitive		Address erosion issues
96	Minor Erosion	258.341	Culturally Sensitive		Address erosion issues
97	Moderate erosion	258.739	Culturally Sensitive		Address erosion issues and install new berms
98	Compromised berm and moderate erosion	259.787	Culturally Sensitive		Address erosion issues and install new berms
99	Minor Erosion	259.807	Culturally Sensitive		Address erosion issues and install new berms
100	Compromised Berm	260.090	Culturally Sensitive		Address erosion issues and install new berms. Vegetation (tree growth) issues to be addressed
102	Compromised Berm	269.348	Culturally Sensitive		Address erosion issues and install new berms. Vegetation (tree growth) issues to be addressed
104	Minor Erosion	272.255			Address erosion issues and install new berms. Vegetation (tree growth) issues to be addressed
105	Minor Erosion	272.619			Address erosion issues and install new berms. Vegetation (tree growth) issues to be addressed



ID	Category	KP	Culturally Sensitive Area	Environmentally Sensitive Area	Recommended Actions
106	Moderate erosion	273.051			Address erosion issues and install new berms. Vegetation (tree growth) issues to be addressed
107	Moderate erosion	274.351			Address erosion issues and install new berms. Vegetation (tree growth) issues to be addressed
108	Minor Erosion	274.630			Address erosion issues and install new berms. Vegetation (tree growth) issues to be addressed
109	Moderate erosion	278.127			Address erosion issues and install new berms. Vegetation (tree growth) issues to be addressed
110	Minor Erosion	278.850			Address erosion issues and install new berms. Vegetation (tree growth) issues to be addressed
111	Minor Erosion	281.343			Address erosion issues and install new berms. Vegetation (tree growth) issues to be addressed
112	Minor Erosion	281.503			Address erosion issues and install new berms. Vegetation (tree growth) issues to be addressed
113	Moderate erosion	282.213			Address erosion issues and install new berms. Vegetation (tree growth) issues to be addressed
114	Minor Erosion	282.482			Address erosion issues and install new berms. Vegetation (tree growth) issues to be addressed
115	Minor Erosion	284.670			Address erosion issues and install new berms. Vegetation (tree growth) issues to be addressed
116	Additional berm/s needed	284.992			Address erosion issues and install new berms. Vegetation (tree growth) issues to be addressed
117	Moderate erosion	286.185			Address erosion issues and install new berms. Vegetation (tree growth) issues to be addressed
118	Minor Erosion	287.050			Address erosion issues and install new berms. Vegetation (tree growth) issues to be addressed
119	Minor Erosion	287.253			Address erosion issues and install new berms. Vegetation (tree growth) issues to be addressed
120	Minor Erosion	287.253			Address erosion issues and install new berms. Vegetation (tree growth) issues to be addressed
121	Minor Erosion	293.051			Address erosion issues and install new berms. Vegetation (tree growth) issues to be addressed
122	Moderate erosion	294.084	Culturally Sensitive		Address erosion issues and install new berms. Vegetation (tree growth) issues to be addressed
124	Minor Erosion	296.083			Address erosion issues and install new berms. Vegetation (tree growth) issues to be addressed
125	Moderate erosion	297.919	Culturally Sensitive		Address erosion issues and install new berms. Vegetation (tree growth) issues to be addressed
126	Minor Erosion	298.366			Address erosion issues and install new berms. Vegetation (tree growth) issues to be addressed
127	Minor Erosion	298.366			Address erosion issues and install new berms. Vegetation (tree growth) issues to be addressed
128	Compromised Berm	298.833			Berms have punched through in places. New berms required and minor erosion along edging. Vegetation (tree growth) issues to be addressed
129	Moderate erosion	299.837			Berms have punched through in places. New berms required and minor erosion along edging. Vegetation (tree growth) issues to be addressed.
131	Moderate erosion	301.440			New berms required and minor erosion along edging. Vegetation (tree growth) issues to be addressed.
132	Compromised Berm	303.394	Culturally Sensitive		New berms required and minor erosion along edging. Vegetation (tree growth) issues to be addressed.
133	Additional berm/s needed	303.919	Culturally Sensitive		New berms required and minor erosion along edging. Vegetation (tree growth) issues to be addressed.
134	Minor Erosion	304.206			New berms required and minor erosion along edging. Vegetation (tree growth) issues to be addressed.
135	Moderate erosion	305.282			New berms required and minor erosion along edging. Vegetation (tree growth) issues to be addressed.
136	Minor Erosion	305.441			New berms required and minor erosion along edging. Vegetation (tree growth) issues to be addressed.

ID	Category	KP	Culturally Sensitive Area	Environmentally Sensitive Area	Recommended Actions
137	Additional berm/s needed	306.402			New berms required and minor erosion along edging. Vegetation (tree growth) issues to be addressed.
138	Compromised Berm	306.590			New berms required and minor erosion along edging. Vegetation (tree growth) issues to be addressed.
139	Compromised berm and moderate erosion	306.741			New berms required and minor erosion along edging. Vegetation (tree growth) issues to be addressed.
140	Moderate erosion	306.774			New berms required and minor erosion along edging. Vegetation (tree growth) issues to be addressed.
141	Compromised Berm	307.002			New berms required and minor erosion along edging. Vegetation (tree growth) issues to be addressed.
142	Compromised Berm	307.336			New berms required and minor erosion along edging. Vegetation (tree growth) issues to be addressed.
143	Minor Erosion	308.476			New berms required and minor erosion along edging. Vegetation (tree growth) issues to be addressed.
145	Compromised Berm	312.633	Culturally Sensitive		New berms required and minor erosion along edging. Vegetation (tree growth) issues to be addressed.
146	Compromised Berm	312.649	Culturally Sensitive		New berms required and minor erosion along edging. Vegetation (tree growth) issues to be addressed.
147	Compromised Berm	312.830	Culturally Sensitive		New berms required and minor erosion along edging. Vegetation (tree growth) issues to be addressed.
148	Compromised Berm	313.250	Culturally Sensitive		New berms required and minor erosion along edging. Vegetation (tree growth) issues to be addressed.
149	Minor Erosion	314.662	Culturally Sensitive		New berms required and minor erosion along edging. Vegetation (tree growth) issues to be addressed.
150	Compromised Berm and Minor Erosion	316.945	Culturally Sensitive		New berms required and minor erosion along edging. Vegetation (tree growth) issues to be addressed.
151	Minor Erosion	317.737	Culturally Sensitive		Berms have punched through in places. New berms required and minor erosion along edging. Vegetation (tree growth) issues to be addressed.
152	Minor Erosion	318.005	Culturally Sensitive		Berms have punched through in places. New berms required and minor erosion along edging. Vegetation (tree growth) issues to be addressed.
153	Compromised Berm and Minor Erosion	318.110	Culturally Sensitive		Berms have punched through in places. New berms required and minor erosion along edging. Vegetation (tree growth) issues to be addressed.
154	Minor Erosion	318.249	Culturally Sensitive		Berms have punched through in places. New berms required and minor erosion along edging. Vegetation (tree growth) issues to be addressed.
155	Minor Erosion	318.439	Culturally Sensitive		Berms have punched through in places. New berms required and minor erosion along edging. Vegetation (tree growth) issues to be addressed.
156	Minor Erosion	319.731	Culturally Sensitive		Berms have punched through in places. New berms required and minor erosion along edging. Vegetation (tree growth) issues to be addressed.
158	Compromised Berm and Minor Erosion	320.449	Culturally Sensitive		Berms have punched through in places. New berms required and minor erosion along edging. Vegetation (tree growth) issues to be addressed.
159	Compromised Berm	320.652	Culturally Sensitive		Berms have punched through in places. New berms required and minor erosion along edging. Vegetation (tree growth) issues to be addressed.
160	Minor Erosion	320.976	Culturally Sensitive		Berms have punched through in places. New berms required and minor erosion along edging. Vegetation (tree growth) issues to be addressed.
161	Moderate erosion	321.301	Culturally Sensitive		Berms have punched through in places. New berms required and minor erosion along edging. Vegetation (tree growth) issues to be addressed.
162	Compromised Berm	321.399	Culturally Sensitive		Berms have punched through in places. New berms required and minor erosion along edging. Vegetation (tree growth) issues to be addressed.
164	Compromised Berm and Minor Erosion	321.959	Culturally Sensitive		Berms have punched through in places. New berms required and minor erosion along edging. Vegetation (tree growth) issues to be addressed.
165	Minor Erosion	321.983	Culturally Sensitive		Address minor erosion issues.
166	Minor Erosion	323.732	Culturally Sensitive		Address minor erosion issues.

ID	Category	KP	Culturally Sensitive Area	Environmentally Sensitive Area	Recommended Actions
167	Minor Erosion	325.262	Culturally Sensitive		Address minor erosion issues
168	Moderate erosion	328.382	Culturally Sensitive		Add new berms
169	Minor Erosion	328.424	Culturally Sensitive		Address minor erosion issues
170	Minor Erosion	330.329	Culturally Sensitive		Address minor erosion issues
171	Minor Erosion	332.368	Culturally Sensitive		Address minor erosion issues .Add a new berms
172	Minor Erosion	335.007	Culturally Sensitive		Address minor erosion issues
173	Minor Erosion	335.750	Culturally Sensitive		Address minor erosion issues
174	Minor Erosion	336.835	Culturally Sensitive		Address minor erosion issues
176	Compromised Berm	337.943	Culturally Sensitive		Install new berm
177	Minor Erosion	339.453	Culturally Sensitive		Monitor Erosion
178	Minor Erosion	341.125	Culturally Sensitive		Monitor Erosion
179	Minor Erosion	341.350	Culturally Sensitive		Monitor Erosion
180	Minor Erosion	341.464	Culturally Sensitive		Monitor Erosion
181	Minor Erosion	341.587	Culturally Sensitive		Monitor Erosion
182	Minor Erosion	342.468	Culturally Sensitive		Monitor Erosion
183	Minor Erosion	343.466	Culturally Sensitive		Monitor Erosion
184	Minor Erosion	343.954	Culturally Sensitive		Monitor Erosion
185	Minor Erosion	344.208	Culturally Sensitive		Monitor Erosion
186	Minor subsidence and minor Erosion	344.304	Culturally Sensitive		Monitor Erosion
187	Moderate subsidence	344.962	Culturally Sensitive		Fill subsidence and stabilise
190	Compromised Berm	348.032	Culturally Sensitive		Install new berm
191	Minor subsidence	358.605	Culturally Sensitive		Monitor Subsidence and Erosion
192	Minor subsidence	371.177	Culturally Sensitive		Monitor Subsidence
193	Minor subsidence	371.526	Culturally Sensitive		Monitor Subsidence
194	Minor Erosion	383.442	Culturally Sensitive		Monitor Erosion
195	Moderate subsidence	383.912	Culturally Sensitive		Fill
196	Moderate erosion	384.235	Culturally Sensitive		Fill and Smooth
197	Minor subsidence	386.251	Culturally Sensitive		Monitor Subsidence
198	Minor Erosion	388.807	Culturally Sensitive		Monitor Erosion
199	Minor Erosion	394.592	Culturally Sensitive		Monitor Erosion. Note: Berms cannot be extended beyond Easement due to Cultural Heritage Issues
200	Compromised Berm and Minor Erosion	400.535	Culturally Sensitive		Monitor Erosion. Note: Berms cannot be extended beyond Easement due to Cultural Heritage Issues
201	Compromised berm, Moderate subsidence and Moderate erosion	410.253	Culturally Sensitive		Repair berms and address subsidence issues
202	Minor Erosion	410.517			Repair berms and address subsidence issues.
203	Compromised Berm	411.560	Culturally Sensitive		Repair berm and address minor erosion issues
204	Compromised Berm	414.322			Repair berm and address minor erosion issues
205	Compromised Berm	415.886			Repair berm and address minor erosion issues
206	Compromised Berm	417.573			Repair berm and address minor erosion issues
207	Compromised Berm	419.687			Repair berm and address minor erosion issues

ID	Category	KP	Culturally Sensitive Area	Environmentally Sensitive Area	Recommended Actions
208	Minor subsidence and minor erosion	<b>423.258</b>			Address subsidence issues
209	Moderate erosion	<b>423.457</b>			Repair berm and address minor erosion issues
210	Compromised Berm and Minor Erosion	<b>426.408</b>			Repair berm and address minor erosion issues
211	Compromised Berm	<b>430.760</b>			Repair berm and address minor erosion issues
212	Compromised Berm and Minor Erosion	<b>431.413</b>	Culturally Sensitive		Repair berm and address minor erosion issues
213	Compromised Berm and Minor Erosion	<b>431.622</b>	Culturally Sensitive		Repair berm and address minor erosion issues
214	Compromised Berm and Minor Erosion	<b>443.167</b>	Culturally Sensitive		Repair berm and address minor erosion issues
215	Compromised Berm	<b>443.599</b>	Culturally Sensitive		Repair berm and address minor erosion issues
216	Compromised Berm	<b>444.367</b>	Culturally Sensitive		Repair berm and address minor erosion issues
217	Compromised Berm and Minor Erosion	<b>448.181</b>	Culturally Sensitive		Repair berm and address minor erosion issues
218	Compromised Berm	<b>450.742</b>	Culturally Sensitive		Repair berm and address minor erosion issues
219	Compromised Berm and Minor Erosion	<b>450.955</b>	Culturally Sensitive		Repair berm and address minor erosion issues
220	Compromised berm and moderate erosion	<b>451.555</b>	Culturally Sensitive		Repair berm and address minor erosion issues
221	Compromised Berm and Minor Erosion	<b>452.207</b>	Culturally Sensitive		Repair berm and address minor erosion issues
222	Compromised Berm	<b>452.947</b>	Culturally Sensitive		Repair berm and address minor erosion issues
223	Moderate erosion	<b>461.614</b>	Culturally Sensitive		Address erosion issues
224	Moderate subsidence	<b>464.359</b>	Culturally Sensitive		Address subsidence issues
225	Minor subsidence	<b>464.755</b>	Culturally Sensitive		Address subsidence issues
226	Compromised Berm	<b>464.802</b>	Culturally Sensitive		Repair berm and minor erosion issues
227	Minor subsidence and minor Erosion	<b>472.836</b>	Culturally Sensitive		Addition of new berms and address minor erosion issues
228	Moderate erosion	<b>477.335</b>	Culturally Sensitive		Address erosion issues
229	Minor subsidence	<b>478.344</b>	Culturally Sensitive		Address subsidence issues
230	Moderate subsidence	<b>479.406</b>	Culturally Sensitive		Address subsidence issues
231	Additional berm/s needed	<b>482.598</b>	Culturally Sensitive		Add new berms suitable for receiving environment
232	Moderate erosion	<b>485.242</b>	Culturally Sensitive		Add new berms suitable for receiving environment
233	Moderate erosion	<b>498.337</b>	Culturally Sensitive		Add new berms suitable for receiving environment
234	Minor subsidence	<b>508.734</b>	Culturally Sensitive		Repair berm and address minor subsidence issues
235	Minor Erosion	<b>552.121</b>	Culturally Sensitive		Monitor Erosion
236	Minor subsidence	<b>582.366</b>	Culturally Sensitive		Monitor Subsidence
238	Minor Erosion	<b>598.328</b>	Culturally Sensitive		Monitor Erosion
239	Minor Erosion	<b>602.613</b>	Culturally Sensitive		Monitor Erosion
240	Minor Erosion	<b>603.809</b>	Culturally Sensitive		Monitor Erosion
241	Moderate erosion	<b>603.860</b>	Culturally Sensitive		Address Erosion issued
242	Minor Erosion	<b>606.008</b>	Culturally Sensitive		Monitor Erosion
243	Minor Erosion	<b>607.857</b>	Culturally Sensitive	Environmentally sensitive	Monitor Erosion
245	Moderate erosion	<b>614.960</b>	Culturally Sensitive	Environmentally sensitive	Address erosion and subsidence issues
248	Moderate erosion	<b>619.983</b>	Culturally Sensitive	Environmentally sensitive	Address erosion and subsidence issues

ID	Category	KP	Culturally Sensitive Area	Environmentally Sensitive Area	Recommended Actions
250	Moderate erosion	<b>620.181</b>	Culturally Sensitive	Environmentally sensitive	Address erosion and subsidence issues
251	Moderate erosion	<b>619.919</b>	Culturally Sensitive	Environmentally sensitive	Address erosion and subsidence issues
253	Moderate erosion	<b>621.221</b>	Culturally Sensitive	Environmentally sensitive	Address erosion and subsidence issues

---

## 2.2 APPENDIX B – NOTIFICATION OF COMMENCEMENT

---

**Marc Rullo**

---

**From:** Marc Rullo  
**Sent:** Monday, 29 May 2017 3:12 PM  
**To:** EPBCMonitoring@environment.gov.au  
**Cc:** Russell Brooks; Jeff.richardson@ecoz.com.au; Cox, Vaughn  
**Subject:** Notification of Commencement | Jemena Northern Gas Pipeline (EPBC 2015/7569)

Dear Sir or Madam,

In accordance with Condition 7 of EPBC Decision 2015/7569 (Jemena Northern Gas Pipeline), Please be advised the commencement of actions was **20 May 2017**.

Please acknowledge receipt of this email. If you require further information, do not hesitate to contact me using the details below.

Thank you and kind regards,

**Marc Rullo**  
Project Engineer – Northern Gas Pipeline  
**Jemena**  
Level 15, 567 Collins Street, Melbourne, VIC 3000  
T: (03) 9173 7810 | M: 0400 375 012 | F: (03) 9173 7515  
[marc.rullo@jemena.com.au](mailto:marc.rullo@jemena.com.au) | [www.jemena.com.au](http://www.jemena.com.au)

